

🕒 Completion - AUG 2026

Sobha Seahaven

Dubai Marina



MMT International Real Estate

Dubai, United Arab Emirates

🔒 Verified Agent

Phone 971501639194

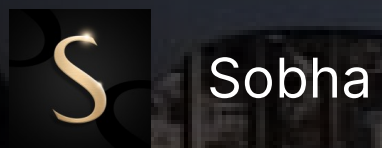
Email info@mmtrealestate.com

Website


Instagram:

 WhatsApp

 Email




Sobha Seahaven

 Furnishing - No

 Parking -

 Floors - G + 67 floors

 Service charge -
21 AED/sqft

Project general facts

Sobha Seahaven by Sobha Group, a brand new residential development offering a choice of luxury design 1, 2 & 3 bedroom apartments located at Dubai Harbour. These amazing design three towers collection are laced with lower level of surprising lifestyle amenities, where the highest of them comes with 67-storey, rising high in the sky with awe-inspiring views of Dubai.

Finishing and materials

Extra large format Porcelain tile. Pre-Engineered timber flooring. Contemporary & stylish Carpet. Veneer finished solid core tall & elegant doors. Marble & Solid surface counter tops. Doubly Glazed Floor to Ceiling glass curtain wall. Leatherette & rich veneer finished wardrobes. Clear heights of 3 meters in Living areas. Smart Home automation enabled. State-of-art home appliances. Elegant Single slot diffusers. Flexi track lighting.

Kitchen and appliances

Kitchens will come fully-fitted and will be equipped with Miele fittings and marble and solid surface countertops. Smart home system and state-of-the-art home appliances will also be offered in Sobha Seahaven.

Furnishing

No. Bedroom wardrobe in all units

Location description and benefits

Sobha Seahaven located in the Mouth of Dubai Harbour. Residents of this development can get to other areas of the emirate, as well as to key attractions and landmarks, in just a several-minute drive thanks to direct access to the Sheikh Zayed Road. For instance, Downtown Dubai with the iconic Burj Khalifa, The Dubai Mall and Business Bay, which is the business center of the emirate, are reachable within a 20-minute drive from your apartment. Dubai Harbour is located at the intersection of the iconic Palm Jumeirah and Bluewaters, equidistant from Dubai International Airport and Al Maktoum International Airport. This unique waterfront neighbourhood is a stone's throw away from the city's most-loved landmarks, beautiful beaches and world-famous attractions such as Ain Dubai and Burj Al Arab. Embrace the call of the sea at Dubai Harbour. An extraordinary seafront district that seamlessly merges a range of F&B and retail offerings with VIP, living, and hospitality experiences, Dubai Harbour is also home to the most advanced cruise terminal and the largest marina in the region.

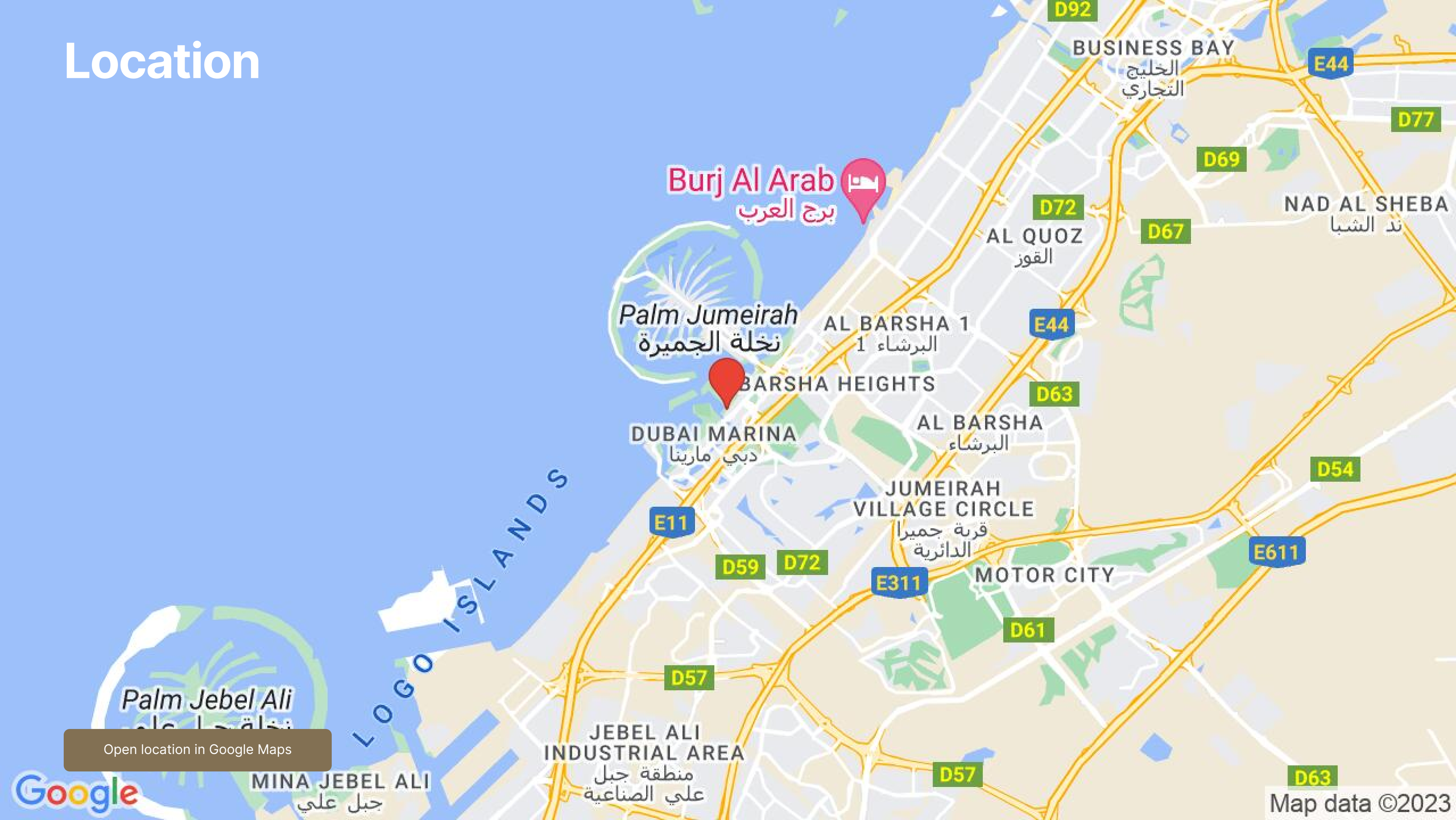
Architecture



Interior



Location



Burj Al Arab
برج العرب

Palm Jumeirah
نخلة الجميرة

BARSHA HEIGHTS

DUBAI MARINA
دبي مارينا

AL BARSHA 1
البرشاء 1

AL BARSHA
البرشاء

JUMEIRAH VILLAGE CIRCLE
قرية جميرا
الدائرية

MOTOR CITY

JEBEL ALI INDUSTRIAL AREA
منطقة جبل
علي الصناعية

Open location in Google Maps



Map data ©2023



Facilities



Swimming pool

Visualisation from developer



Health club

Visualisation from developer



Outdoor Cinema

Image for general understanding



Skate park

Image for general understanding



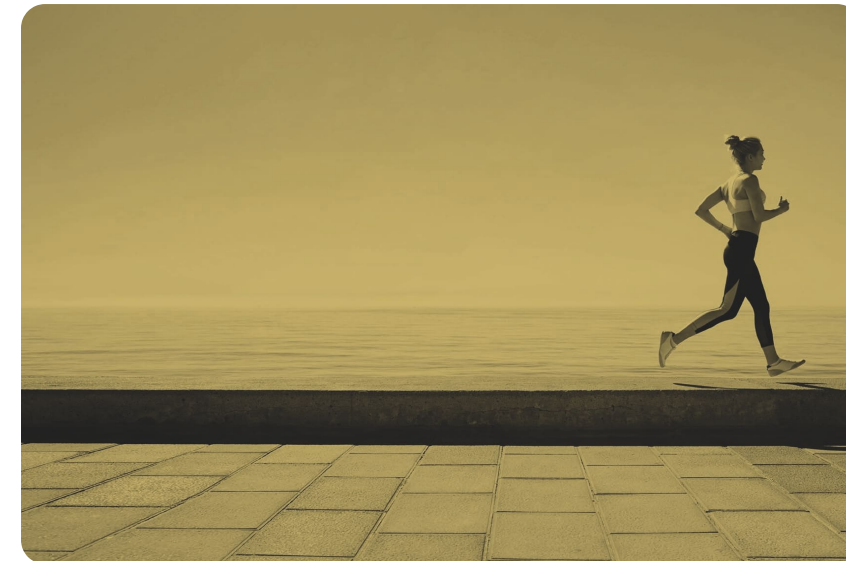
Kids pool

Image for general understanding



Sauna and steam

Image for general understanding



Walking track

Visualisation from developer



Dining places

Visualisation from developer

Facilities



Water sport

Visualisation from developer



Family zone with BBQ area

Visualisation from developer

Payment plan



Payment plan

20% payment	On booking
40% payment	During construction
40% payment	Upon Handover

Condition for the unit resale

**Full floor or more than 30
mln-34% Other units - 50 + 4%**

Typical units and prices



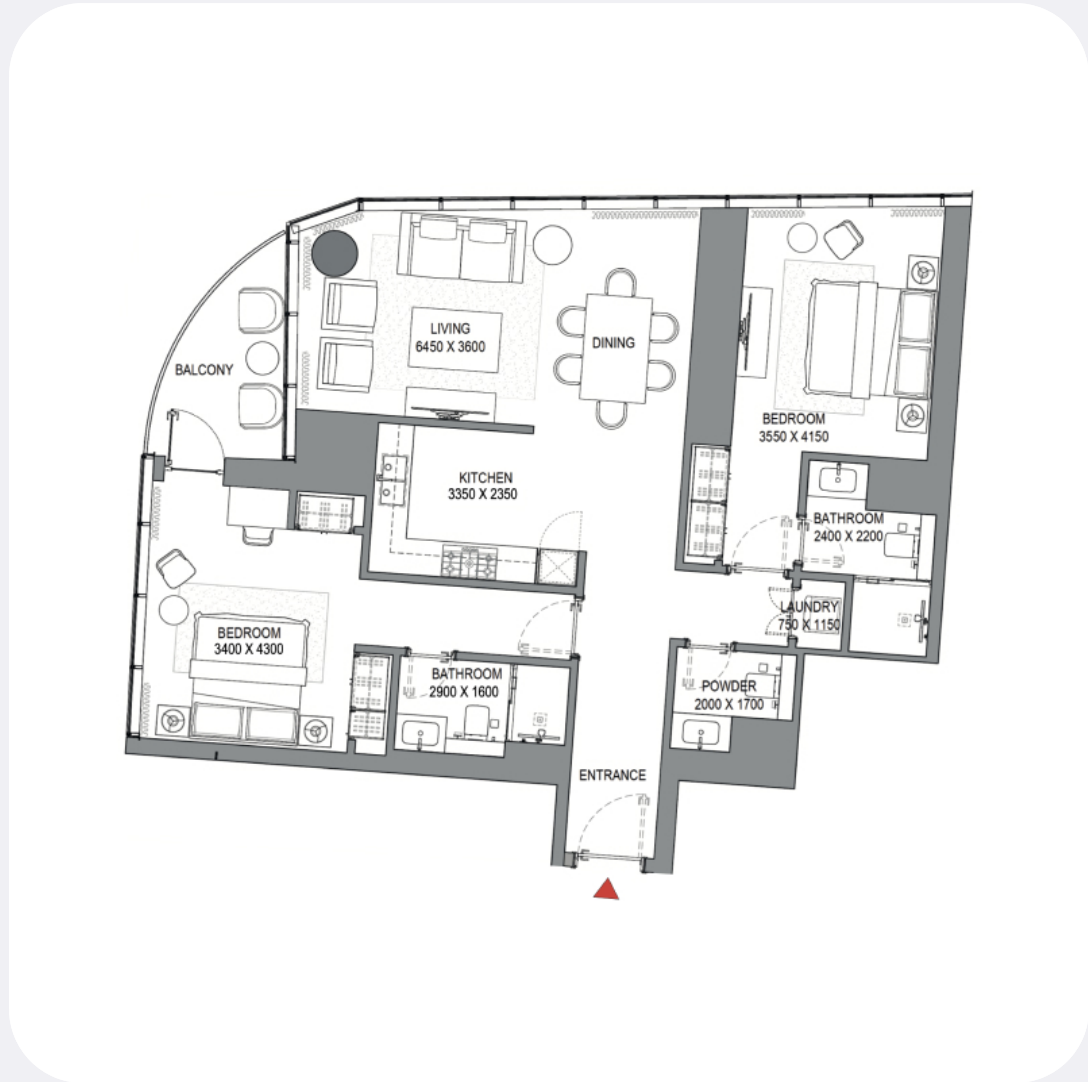
Apartments **1 bedroom**

FROM **AED 3,399,680** TO **AED 5,424,570**
 840 sqft / 78 m² 1239 sqft / 115 m²



Apartments **1,5 bedroom**

FROM **AED 4,556,162** TO **AED 5,091,503**
 1199 sqft / 111 m² 1242 sqft / 115 m²



Apartments **2 bedroom**

FROM **AED 5,604,126** TO **AED 8,104,068**
 1475 sqft / 137 m² 1929 sqft / 179 m²

Typical units and prices



Apartments

3 bedroom

FROM
AED 9,344,595

2359 sqft / 219 m²

TO
AED 20,667,024

3686 sqft / 342 m²



Penthouse

4 bedroom

FROM
AED 22,240,240

4044 sqft / 376 m²

TO
AED 32,892,113

5475 sqft / 509 m²



Penthouse

5 bedroom

FROM
AED 51,257,125

7826 sqft / 727 m²

TO
AED 53,911,688

8231 sqft / 765 m²

Typical units and prices



Penthouse

6 bedroom

FROM

**AED
130,000,000**

19185 sqft / 1782 m²

TO

**AED
135,000,000**

19871 sqft / 1846 m²



Penthouse

3 bedroom

FROM

No info

TO

No info

Do you have any questions? Contact me.



MMT International Real Estate

Phone 971501639194

Email info@mmtrealestate.com

Instagram



WhatsApp



Email

